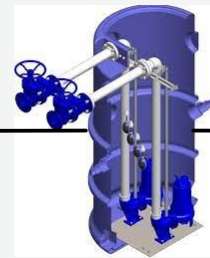


BACIA 1

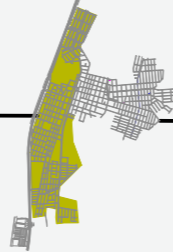


REDE DE ESGOTOS  
JD. BOTÂNICO,  
CENTRO  
(PARCIAL), VILA NOSSA  
SRA. DAS  
GRAÇAS (PARCIAL)

EEE 15 DE SETEMBRO

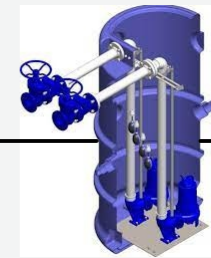


REDE DE ESGOTO:  
JD. BOTÂNICO, CENTRO (PARCIAL),  
VILA NOSSA SRA. DAS GRAÇAS,  
CONJ. HESSAN J. MOURANI,  
JD. ANHANGUERA, JD. PRIMAVERA I E II



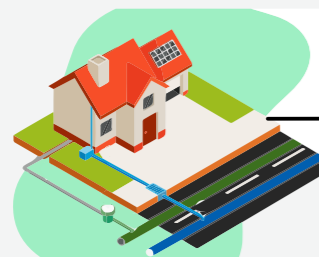
BACIA 4

EEE DISTRITO INDÚSTRIAL



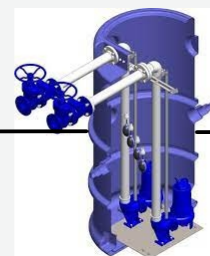
REDE DE ESGOTO:  
DISTRITO INDÚSTRIAL

BACIA 2



REDE DE ESGOTOS  
VILA VITÓRIA  
(PARCIAL)

EEE 7 DE SETEMBRO



REDE DE ESGOTO:  
CENTRO (PARCIAL), VILA MARIA,  
VILA VITÓRIA (PARCIAL), VILA CALAZANS  
(PARCIAL), MORADA DO SOL, VILA SANTO  
ANTONIO, E JD. ALVORADA (PARCIAL)

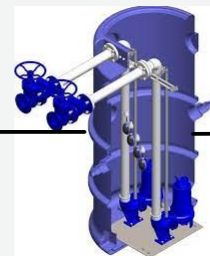


BACIA 3

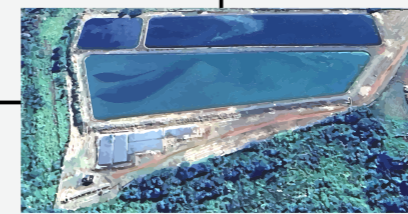
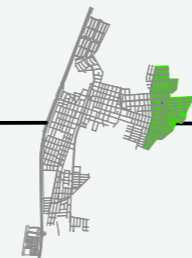


REDE DE ESGOTOS  
CDHU

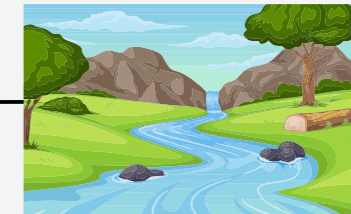
EEE CDHU



REDE DE ESGOTO:  
JD. FLAMBOYANT, VILA CALAZANS  
(PARCIAL), RIO VERDE, JD. PAULISTA  
E JD. ALVORADA (PARCIAL)



ETE VACARIÚ  
170m³/h



RIO VERDE

**SES - PROGNÓSTICO - FLUXOGRAMA ESGOTO - GUARÁ / SEDE**